

## TerraMai Shiplap 2.0 Installation Instructions.

To properly install Shiplap 2.0 Paneling, fasten the boards using either trim nails and or staples.

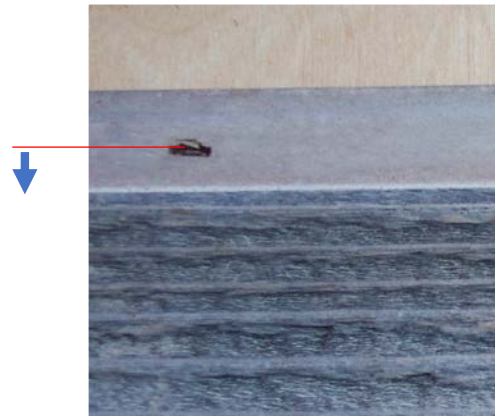


The fastener should be placed  $\frac{1}{4}$ " from the inside edge of the profile.

$\frac{1}{4}$ "

A diagram showing a red horizontal line indicating the distance from the inside edge of the profile to the fastener. A blue double-headed vertical arrow indicates the distance is  $\frac{1}{4}$ ".

Placing the fastener closer than  $\frac{1}{4}$ " to the inside edge could cause the nail or staple to be seen in the reveal.



$\frac{1}{8}$ " reveal

A diagram showing a red horizontal line indicating the distance from the inside edge of the profile to the fastener. A blue double-headed vertical arrow indicates the distance is  $\frac{1}{8}$ ".

Going past the  $\frac{1}{4}$ " recommendation could cause the fastener to impede installation of the next board due to the nail/staple entering the location where the next board's groove must sit.

